



**RG&E**

An AVANGRID Company

# Rochester Transmission Project Enhancement

## CONTACT

Project Information Line: **888.379.9995**

Website: **[RochesterTransmissionEnhancement.com](http://RochesterTransmissionEnhancement.com)**

Email: **[info@RochesterTransmissionEnhancement.com](mailto:info@RochesterTransmissionEnhancement.com)**

**NYS Public Service Commission Case 20-T-0103**

## PROJECT OVERVIEW

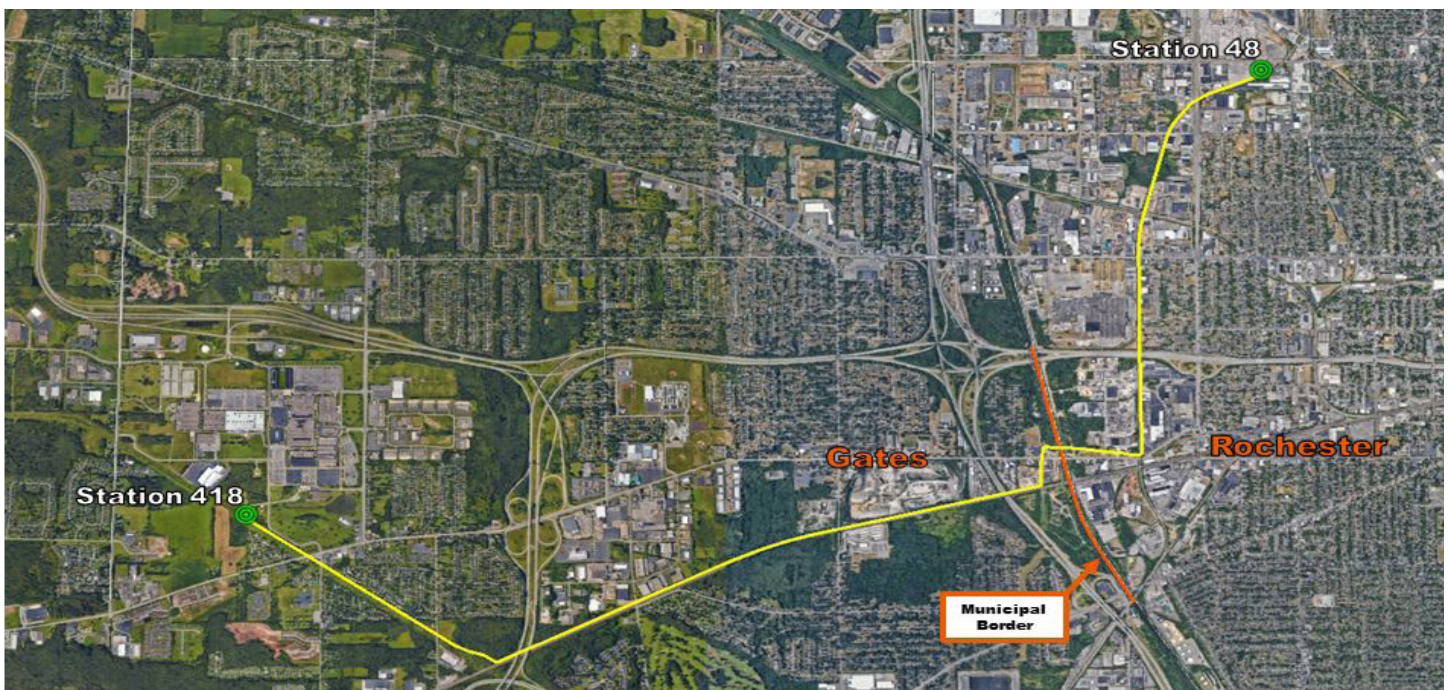
As part of our commitment to provide safe and reliable service to all our customers, Rochester Gas and Electric Corporation (RG&E), in conjunction with our parent company, AVANGRID, is updating the electric transmission system in our service areas. These upgrades comply with new federal reliability requirements. While we are investing in upgrades to meet the community's growing energy demands, we are working closely with our neighbors to ensure that all improvements are performed safely and with minimal disruption to the environment and the community.

## PROJECT PURPOSE AND NEED

In 2010 the Federal Energy Regulatory Commission (FERC) established a "Brightline" threshold that redefined Bulk Electric System (BES) transmission elements as those

operating at 100kV and above. In response, the North American Electric Reliability Corporation (NERC) updated its reliability standards and issued a "Brightline Order."

To comply with these more stringent reliability standards issued at the federal level, RG&E plans to install a new 115 kilovolt (kV) transmission line (L949) between Station 48, located on Lexington Avenue in the City of Rochester, and Station 418, located in the vicinity of the Rochester Technology Park in the Town of Gates, and to expand and upgrade Stations 48 and 418 to accommodate the proposed new line. This project, known as the Rochester Transmission Project (RTP) Enhancement, will provide an additional source of power to Station 418, reinforce the bulk power supply and ensure reliable service under certain contingency scenarios.



*Planned route of new transmission line (L949) between Station 418 in the Town of Gates and Station 48 in the City of Rochester.*



Planned route of new transmission line (L949) into Station 418 in the Town of Gates and into Station 48 in the City of Rochester.

### PROJECT SCOPE

- Addition of a new 115kV transmission line (L949) between Station 48 (City of Rochester) and Station 418 (Town of Gates).
- Proposed L949 total length approximately 6.7 miles located in the City of Rochester (2.5 miles) and Town of Gates (4.2 miles).
- Expansion and upgrade of Stations 48 and 418 to accommodate the receipt of L949.
- Minimizing land impacts by installing L949 along existing electric transmission line rights-of-way and replacing single-circuit poles with double-circuit poles.
- Public Outreach will be conducted via public information meetings, project Fact Sheets, and website updates.
- The project requires an amendment to a PSC Article VII Certificate of Environmental Compatibility and Public Need.

### PROJECT FACTS

Municipalities: City of Rochester and Town of Gates

County: Monroe

Permits: Federal and State (Article VII Amendment)

### TIMETABLE

|  |           |
|--|-----------|
| Initial Field Work:                                  | Completed |
| Article VII Amendment Application Filing:            | Completed |
| Estimated Construction Duration (subject to change): | 19 months |

### BENEFITS TO THE REGION

- The upgraded and expanded facilities will meet the growing demand for additional power in the Rochester region.
- The additional energy brought into the area by the project will encourage and support expanded economic development.
- The upgrades will improve the reliability and resiliency of the entire transmission system, ensuring that the safe and reliable distribution of power is maintained.